

The World Automobile License Plate Exhibition

As part of its public relations activities on automobile license plates and registration aimed at increasing the public's awareness of the roles of license plates in developing a better automobile society, the National Automobile License Plate Council (NALPC) has organized the World Automobile License Plate Exhibition at every Tokyo Motor Show since 2005.

The following were major attractions of the 4th World Automobile License Plate Exhibition held at the same time as the 42nd Tokyo Motor Show 2011 (December 2 through 11, 2011, Tokyo Big Site):

- Display of typical automobile license plates in the five continents of the world
- Display of the history of automobile license plates in Japan
- Display panels on the roles, requirements for, and social functions of automobile license plates
- Display of typical automobile license plates currently used in Japan
- Hands-on experience corner on the preferred number system

The exhibition, held under the auspices of the Ministry of Land, Infrastructure, Transport and Tourism and the Ministry of Foreign Affairs of Japan, ended in great success with more than 18,000 people visiting the booth. The photos below present some scenes of the exhibition.



The World Automobile License Plate Exhibition

March 2012

National Automobile License Plate Council



Most of the presentation was made on rotary display stands.



The exhibition was held under the auspices of the MLIT and MOFA and with the cooperation of related organizations



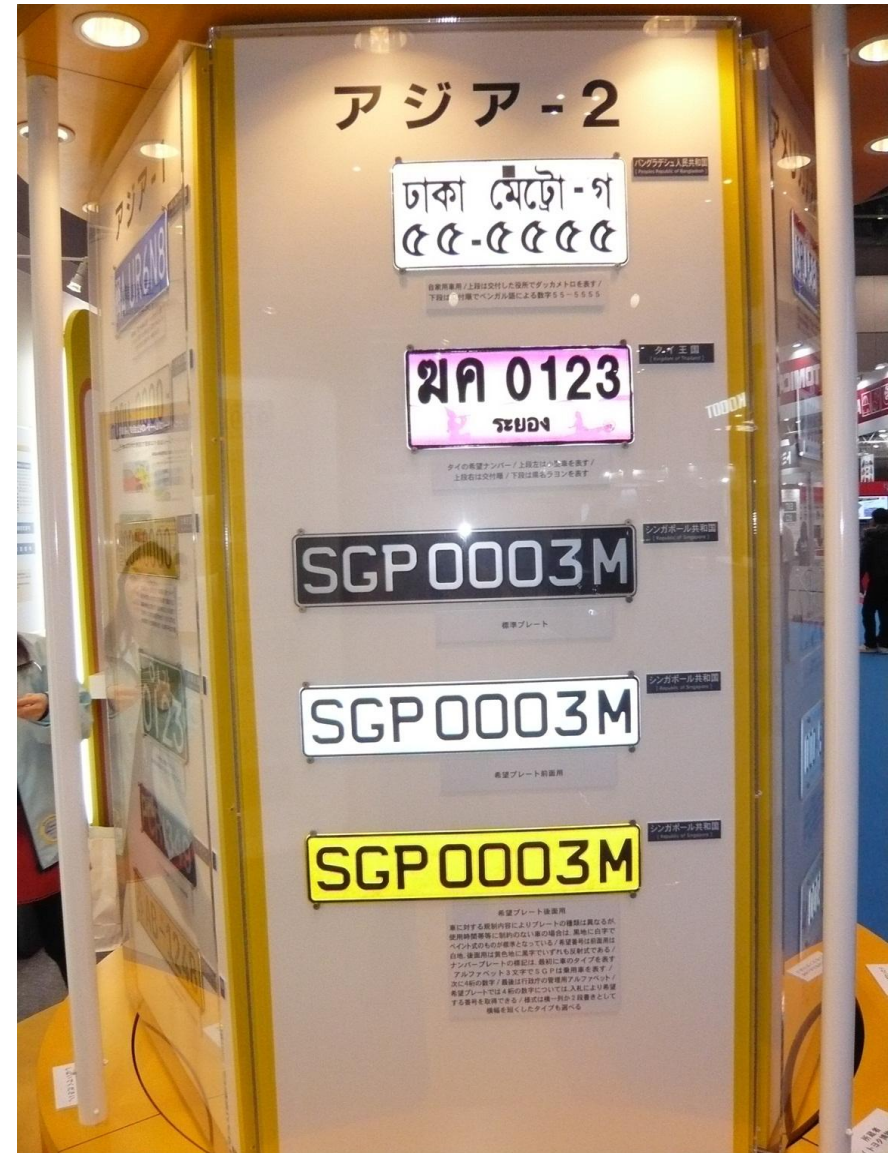
Presentation of the roles, requirements for, and social functions of automobile license plates



History of automobile license plates



Rotary display (Asia 1)



Rotary display (Asia 2)



Rotary display (US/Canada)



Rotary display (Oceania)



Rotary display (Europe/Central and South America)



Rotary display (Middle East/Africa)



Visitors enjoying the exhibition



Visitors enjoying the exhibition